

REGISTRATION.....>

6TH ANNUAL EMORY EPILEPSY SYMPOSIUM NOVEMBER 1, 2014

Atlanta Marriott Evergreen Conference Resort
Stone Mountain, GA 30083

Name: _____

Specialty/Title: _____

Address 1: _____

Address 2: _____

City: _____

State: _____ Zip: _____

Phone: _____ Fax: _____

Email: _____

 Special Requirements (dietary or otherwise): _____

TUITION:

- Patients and Families:** \$25.00 Individual
 \$40.00 Patient & Family

____ # attending (up to 4 participants)

- Physicians:** \$100.00
 Other Healthcare Providers: \$75.00

REGISTER ONLINE AT: www.med.emory.edu/cme

OR

Make check(s) payable to: **Emory University School of Medicine**
and mail to the address below:

Continuing Medical Education
Emory University School of Medicine
1462 Clifton Road NE, Suite 276
Atlanta, GA 30322

For more information please contact CME:

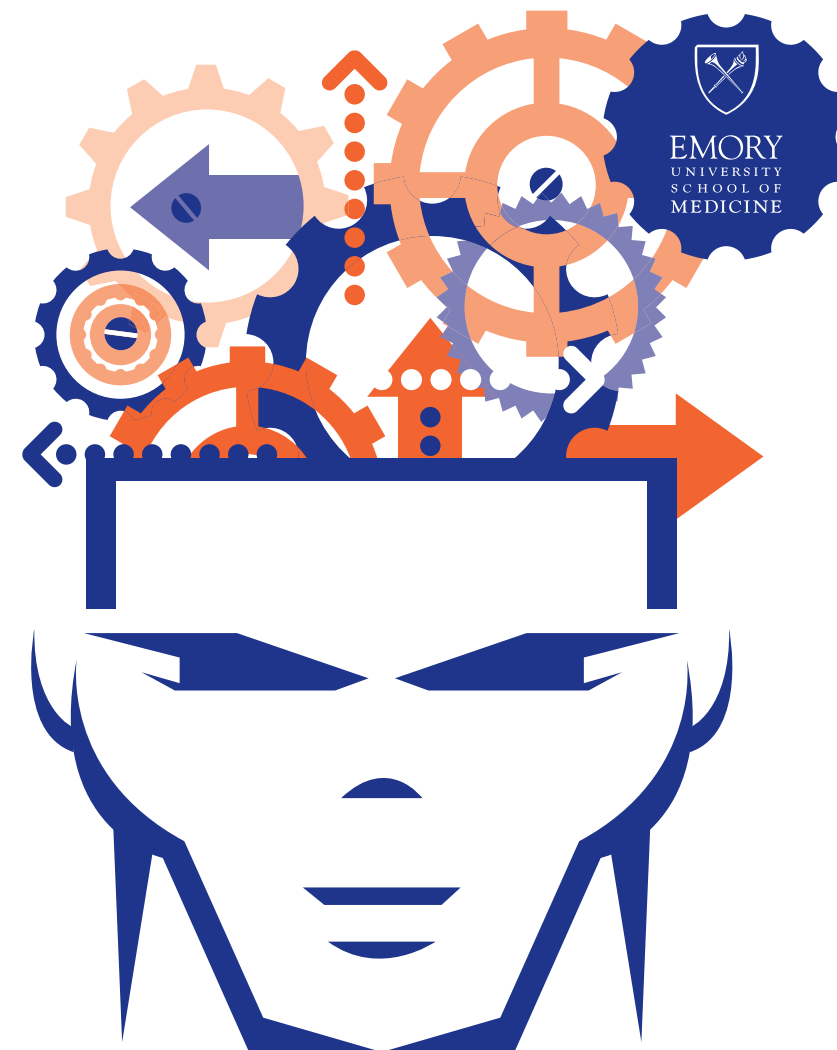
Main: (404) 727-5695
Toll Free: (888) 727-5695
Fax: (404) 727-5667

or **Keir Gray:**
Phone: (404) 727-0063
Fax: 404-727-3768
Email: kgray02@emory.edu



Emory University School of Medicine
Emory Epilepsy Center and
Emory University Hospital
present

REGISTER ONLINE AT:
www.med.emory.edu/cme



Continuing Medical Education
Emory University School of Medicine
1462 Clifton Road, NE, Suite 276
Atlanta, GA 30322

THE 6TH ANNUAL EMORY EPILEPSY SYMPOSIUM NOVEMBER 1, 2014

Atlanta Evergreen Marriott Conference Resort
4021 Lakeview Drive, Stone Mountain, GA 30083

In collaboration with:
The Epilepsy Foundation of Georgia

INFORMATION

COURSE DESCRIPTION

Epilepsy is a medical condition characterized by recurrent seizures that may cause significant physical and mental impairment. Epilepsy affects nearly 3 million Americans and 50 million people worldwide. While medications and other treatments help many patients of all ages, more than a million people continue to have seizures that severely limit their participation in life's experiences.

This live activity will examine the pharmacological and surgical treatment options for epilepsy. In addition, specific topics such as SUDEP (sudden unexpected death in epilepsy) will be discussed. Safety precautions as well as the psychosocial impact that epilepsy has on patients and their families will be addressed too.

Representing a joining together of the community and medical experts in the field of epilepsy, participants will share information, gain knowledge about epilepsy and, learn about available resources and support. This program is intended for physicians, nurses, nurse practitioners and, EEG technologists who care for patients with epilepsy, as well as for patients and their family members.

PROGRAM OBJECTIVES

At the conclusion of this program, participants will be able to:

- Enumerate the pharmacological and surgical treatment options for epilepsy.
- List the ways to decrease the risk of SUDEP (sudden unexpected death epilepsy).
- Describe safety precautions in order to help prevent accidents due to seizures and, also to maximize the patient's ability to perform the same activities that other people of their same age.
- Understand the factors affecting quality of life in epilepsy and the coping mechanisms necessary to improve it.

CONTINUING MEDICAL EDUCATION CREDIT

The Emory University School of Medicine designates this live activity for a maximum of 5 *AMA PRA Category 1 Credit(s)*[™]. Physicians should only claim credit commensurate with the extent of their participation in the activity.

The Emory University School of Medicine is accredited by the Accreditation Council for Continuing Medical Education to provide continuing medical education for physicians.

CONTACT HOURS

Emory Healthcare is an approved provider of continuing nursing education by the Georgia Nurses Association, an accredited approver by the American Nurses Credentialing Center's Commission on Accreditation.

TUITION

The fee of \$100 for physicians and \$75 for other healthcare providers includes the course syllabus, continental breakfast, refreshment breaks, lunch, and other amenities involved in creating a rewarding learning experience. Patient registration is \$25.00 for an individual. A patient and up to 3 family members (total 4 participants) may attend for \$40.00. Scholarships are available. Please contact Keir Gray in the CME office via phone: 404-727-0063, or via email at: kgray02@emory.edu for more information.

Written cancellations received prior to the conference will be refunded less a \$15.00 administrative fee.

CONFERENCE LOCATION

The conference will be held at the Atlanta Evergreen Marriott Conference Resort, 4021 Lakeview Drive, Stone Mountain, GA, 30083, main phone: 770-879-9900, and reservations: 888-670-2250. A limited number of rooms have been reserved at the discounted rate of \$149.00/night, plus tax. Reservations must be made on or before October 10, 2014 to receive the discounted rate. Parking for conference attendees is complimentary. The Stone Mountain Park gate fee is included with your registration, attendees please mention the event when entering the park.

AGENDA

8:30 - 8:55 AM	REGISTRATION
8:55 - 9:00	WELCOME AND INTRODUCTION OF KEY NOTE SPEAKER Naymee Velez-Ruiz, MD
9:00 - 9:45	KEYNOTE: GAPS IN EPILEPSY CARE Selim R. Benbadis, MD

HEALTHCARE PROFESSIONALS TRACK

9:45 - 10:15 AM	ANTIEPILEPTIC DRUGS UPDATE 2014 Edward Faught, MD
10:15 - 10:45	NOT EVERYTHING THAT SHAKES IS EPILEPSY Selim R. Benbadis, MD
10:45 - 11:15	BREAK
11:15 - 11:45	SURGICAL TREATMENT OF EPILEPSY Jon Willie, MD
11:45 - 12:15 PM	SPECIAL TOPIC: SUDDEN UNEXPECTED DEATH IN EPILEPSY Rebecca Fasano, MD

PATIENTS & CAREGIVERS TRACK

9:45 - 10:15 AM	PSYCHIATRIC COMORBIDITIES OF EPILEPSY Evan Gedzelman, MD
10:15 - 10:45	TREATMENT OPTIONS FOR EPILEPSY Andres Rodriguez-Ruiz, MD
10:45 - 11:15	BREAK
11:15 - 11:45	SAFETY ISSUES IN EPILEPSY Diane Teagarden, NP and Sandra Helmers, MD
11:45 - 12:15 PM	SPECIAL TOPIC: MEDICAL MARIJUANA AND EPILEPSY Suzette Laroche, MD
12:15 - 1:15	LUNCH + CANINE ASSISTANTS PRESENTATION
12:15 - 1:15	PATIENT STORIES Brittain Askew (EEG Technologist)
1:15 - 1:45	ROUND TABLE SESSIONS WOMEN'S ISSUES IN EPILEPSY Melanee Newman, NP & Naymee Velez-Ruiz, MD SELF MANAGEMENT OF EPILEPSY Sandra Helmers, MD RESOURCES Lloyd Brown, Epilepsy Foundation of Georgia

FACULTY & PLANNING COMMITTEE

Brittain Askew, REEGT
Emory University Hospital

Lloyd Brown
Director of Education/Client Services
Epilepsy Foundation of Georgia

Andrew Ehrenberg, REEGT
Director, Clinical Neurophysiology
Emory University Hospital

Karen Evans, REEGT
EEG Coordinator
Emory University Hospital

Rebecca Fasano, MD
Assistant Professor of Neurology
Emory University

R. Edward Faught, MD
Professor of Neurology
Emory University

Evan Gedzelman, MD
Assistant Professor of Neurology
Emory University

Sandra Helmers, MD
Professor of Neurology
Emory University

Jan Humphrey, RN
Education Coordinator
Emory University Hospital

Suzette LaRoche, MD
Associate Professor of Neurology
Emory University

Melanee Newman, RN
Epilepsy Research Coordinator
Emory University Hospital

Andres Rodriguez-Ruiz, MD
Assistant Professor of Neurology
Emory University

Susanne Slocum, RN
Neurology Unit Director
Emory University Hospital

Diane Teagarden, NP
Emory University Hospital

Naymee Velez-Ruiz, MD
Assistant Professor of Neurology
Emory University

Jon Willie, MD
Assistant Professor of Neurology
Emory University

GUEST FACULTY

Selim Benbadis, MD
Professor and Director
Comprehensive Epilepsy Program
University of South Florida